

## Alpha Winter Meeting on Allergy Research

Wednesday, 22nd January 2025, 10.30-16.00

Venue: Gustav Weds Vej 10c, 8000 Aarhus C, Room 3130-303

### The bi-annual alpha meeting will be hosted jointly by BCE and HEALTH

Allergic diseases represent the most common chronic condition affecting the lives of more than 25% of the global population. By 2050 an incidence of 4 billion will be reached. The prevalence and socioeconomic impact are particularly on the rise in urbanizing regions and a globalizing world in association with environmental and lifestyle changes.

The meeting is focusing on active research within **all aspects of allergic diseases**.

Different research areas are covered in the program with 3 separate sessions:



Welcome

**Session I: Cells and systems**

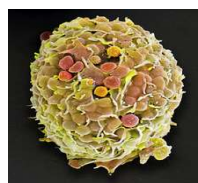
Lunch

**Session II: Molecules and triggers**

Coffee break

**Session III: Therapeutic and clinical approaches**

Aob and closing



The aim of the meeting is to present and discuss projects and ideas and promote both national and international collaboration in the field. Participants are encouraged to present ongoing and upcoming projects related to allergic diseases. The meeting has a particular focus on **young researchers**.

Meeting language is English, coffee and lunch are included.

We are looking forward to welcoming all participants interested or active in the field.

For further information on program, venue, participation and presentation, check:

or contact [e.spillner@bce.au.dk](mailto:e.spillner@bce.au.dk)

Detailed program  
24 h prior to meeting

